

SUMMER VACATION HOLIDAY HOME WORK 2025-26

CLASS - 10

ENGLISH

I . Reading Comprehension

The choices we make on a daily basis—wearing a seatbelt, lifting heavy objects correctly or purposely staying out of any dangerous situation—can either ensure our safety or bring about potentially harmful circumstances.

You and I need to make a decision that we are going to get our lives in order. Exercising self-control, self-discipline and establishing boundaries and borders in our lives are some of the most important things we can do. A life without discipline is one that's filled with carelessness.

We can think it's kind of exciting to live life on the edge. We like the image of "Yeah! That's me! Living on the edge! Woo-hoo!" It's become a popular way to look at life. But if you see, even highways have lines, which provide margins for our safety while we're driving. If we go over one side, we'll go into the ditch. If we cross over the line in the middle, we could get killed. And we like those lines because they help to keep us safe. Sometimes we don't even realize how lines help to keep us safe.

I'm not proud of this, but for the first 20 years of my life at work, I ignored my limits. I felt horrible, physically, most of the time. I used to tell myself, "I know I have limits and that I've reached them, but I'm going to ignore them and see if or how long I can get by with it." I ran to doctors, trying to make myself feel better through pills, vitamins, natural stuff and anything I could get my hands on. Some of the doctors would tell me, "It's just stress." That just made me mad. I thought stress meant you don't like what you do or can't handle life, and I love what I do. But I kept pushing myself, travelling, doing speaking engagements and so on— simply exhausting myself.

Finally, I understood I was living an unsustainable life and needed to make some changes in my outlook and lifestyle.

You and I don't have to be like everyone else or keep up with anyone else. Each of us needs to be exactly the way we are, and we don't have to apologize for it. We're not all alike, and we need to find a comfort zone in which we can enjoy our lives instead of making ourselves sick with an overload of stress and pressure.

On the basis of understanding the passage, answer the following questions:-

Q1) Which of the characteristics are apt about the writer in the following context: "I know I have limits and that I've reached them, but I'm going to ignore them and see if or how long I can get by with it." ?

1. negligent. 2. indecisive. 3. spontaneous
4. reckless. 5. purposeless. 6. patient
a) 2 and 5. b) 3 and 6. c) 1 and 4. d) 2 and 3

Q2) The reason why living on the edge has become popular is because of the

a) constant need for something different. b) population being much younger.

c) exhausting effort to make changes. d) strong tendency to stay within our limits.

Q3) The phrase “potentially harmful circumstances” refers to circumstances that can

(a) certainly be dangerous. (b) be fairly dangerous.

(c) be possibly dangerous. (d) seldom be dangerous.

Q4). Choose the option that correctly states the two meanings of ‘outlook’, as used in the passage.

1. A person’s evaluation of life

2. A person’s experiences in life

3. A person’s point of view towards life

4. A person’s regrets in life

5. A person’s general attitude to life

a) (1) and (4). b) (2) and (3). c) (3) and (5). d) (4) and (5)

Q5) Choose the option that best captures the central idea of the passage from the given quotes.

1. It’s all about quality of life and finding a happy balance between work and friends.

2. To go beyond is as wrong as to fall short.

3. Life is like riding a bicycle. To keep your balance, you must keep moving.

4. Balance is not something you find. It’s something you create.

a) Option (1). b) Option (2). c) Option (3). d) Option (4)

Q6) The author explains the importance of discipline and boundaries in our lives using the example of

a) road accidents. b) traffic rules. c) lines on the highway. d) safe driving.

Q7) The author attempts to _____ the readers through this write-up.

a) rebuke. b) question. c) offer aid to. d) offer advice to

Q8) What is the message conveyed in the last paragraph of the passage?

a) Love what you do. b) Love yourself to love others. c) Be the best version of yourself. d) Be yourself

Q9) Which of the following will be the most appropriate title for the passage?

a) Much too soon. b) Enough is enough. c) How much is too much? d) Have enough to do?

Q10) The author uses colloquial words such as “yeah” and “Woo-hoo!”. Which of the following is NOT a colloquial word?

a) hooked. b) guy. c) stuff. d) stress

II. Competency Based Questions

A. Day by day the nightingale

Grew more sorrowful and pale

Night on night her tired song

Zippered and trilled and bounced along,

Till the birds and beasts grew tired

At a voice so uninspired.

- (a) Why did the nightingale grow sorrowful and pale ?
- (b) The audience got tired of her song because it had become.....
- (c) The nightingale didn't enjoy singing alone. Why ?
- (d) Which poetic device has been used in the phrase 'tired song' ?
- (e) The rhyme scheme of the above lines is
- (f) What did the nightingale now hear instead of the applause of the birds and beasts?
- (g) Which word in the given lines means 'sang quickly' ?

B. Select the most appropriate answer after reading the story "Two Gentlemen of Verona".

- (a) Name the mountain through which the narrator and his companion drove through.
 - (i) Himalayas (ii) Alps. (iii) Mt. Fuji.
- (b) Name the narrator's driver.
 - (i) Lucia. (ii) Luigi. (iii) Nicola
- (c) How were the boys in the story dressed?
 - (i) neatly. (ii) professionally. (iii) untidily
- (d) Which fruit were the boys selling?
 - (i) Apple. (ii) Wild strawberries. (iii) Plum
- (e) Which city is discussed in the story where the narrator and his companion drove to ?
 - (i) Verona. (ii) Naples. (iii) Rome
- (f) What do you mean by demeanour as mentioned in the sentence "As we made the rounds, my interest was again provoked by their remarkable demeanour".
 - (i) situation. (ii) appearance and behaviour (iii) old
- (g) From which place was the last bus going to come so that the boys were waiting on a windy, deserted square?
 - (i) Venice (ii) Florence. (iii) Padua
- (h) What do you mean by the "earnest eyes" in the sentence:- "Yet gazing at the two dark earnest eyes" ?
 - (i) Teary. (ii) Sincere. (iii) Big

(i) What was Lucia suffering from ?

(i) Pneumonia. (ii) Tuberculosis of spine. (iii) Fever

(j) The reason for the ruining of the family of Nicola and Jacopo was

(i) War. (ii) Mother's death. (iii) Illiteracy

III. Pictorial Representation

Imagine the two boys of Verona have grown up into young men. Share how you visualise their future keeping in view the hardships they faced in their childhood.

SANSKRIT

1) महाकविः कालिवासस्य जीवन परिचयं लिखत। (दश-वाक्यानि)

2) रेखांकित पदेषु संधि-संधि विच्छेदं वा कृत्वा लिखत।

- 1) ईश्वरः एकः भवति ।
- 2) कीटोऽपि सुमनः सङ्गादारोहति सतां शिरः ।
- 3) कालोऽहम् एवास्मि ।
- 4) हरये स्वाहा।
- 5) आगच्छत प्रिय+छात्राः !
- 6) सुस्वागतं भो ! अरूणाचलेऽस्मिन् ।
- 7) के+आगच्छन् ?
- 8) पदच्छेदः तु पाठकस्य गुणः ।
- 9) जगदीशः सर्वत्र वर्तते।
- 10) वाक्+अर्थो इव पार्वती परमेश्वरौ।
- 11) तत्+नाम सुन्दरमस्ति ।
- 12) वाङ्मयं तपः उच्यते।

3) निम्नलिखितेषु वाक्येषु रेखाङ्कितपदान् आधृत्य विकल्पेभ्यः उचितं पदं चित्वा प्रश्ननिर्माणं कर्तव्यम्-

1) अभीष्टं वस्तुजातं प्राप्य याचकाः तुष्टाः आसन्।

(क) किम् (ख) कीदृशम् (ग) कम् (घ) कथम्

2) राजा पुत्रवत् प्रजाः पालयति स्म।

(क) कः (ख) काः (ग) कस्याः (घ) कस्याम्

3) दानशालासु विचरन् सः राजा अचिन्तयत्।

(क) कासु (ख) कुत्र (ग) कः (घ) कदा

4) सः राजा तान् उवाच।

(क) कान् (ख) काम् (ग) कम् (घ) काः

5) राजा शिविः याचकेभ्यः दानं ददाति स्म।

(क) काभ्यः (ख) कैः (ग) केभ्यः (घ) कान्

4) प्रसंगानुसारम् उचितम् अर्थ विकल्पेभ्यः चित्वा लिखत-

(i) एकदा शक्रः नेत्रहीन याचकस्य रूपे आगत्य नेत्रदानाय प्रार्थयत्।

(क) साधारणजनस्य (ख) देवस्य (ग) भिक्षुकस्य (घ) नृपस्य

(ii) भगवान् बोधिसत्त्वः याचकेभ्यः अन्नवस्त्रादिकं प्रार्थितं वस्तुं ददाति स्म।

(क) इच्छितम् (ख) आदेशितम् (ग) अपूर्णम् (घ) दत्तम्

(iii) आर्त्तानाम् दानाय दृढनिश्चयः राजा तस्मै चक्षुर्द्वयं समर्पितवान्।

(क) दुःखयुक्तानाम् (ख) सुखयुक्तानाम् (ग) धनयुक्तानाम् (घ) बलयुक्तानाम्

(iv) अहो धृतिः ! अहो सत्त्वम् ! अहो सत्त्वहितैषिता ।

(क) बुद्धिः (ख) पशुः (ग) मानवः (घ) जीवः

(v) नृपस्य स्वेषु गात्रेषु निरासक्तिः अभवत्।

(क) देहेषु (ख) अङ्गेषु (ग) नेत्रेषु (घ) कर्णेषु

HINDI

1. 'माता का अँचल' मैं भोलानाथ अपने मित्रों के साथ खेलते थे। जीवन में मित्रों व खेल से प्राप्त सुखों पर 30-40 शब्दों में प्रकाश डालें।

2. वाक्य के भेदों (रचनानुसार)

को सोदाहरण दर्शाए।

MATHEMATICS

1. Write about any one Indian mathematician.

2. **Assertion (A):**

There exists an irrational number between every pair of rational numbers.

Reason (R):

The set of irrational numbers is finite, while the set of rational numbers is infinite.

Options:

a) Both A and R are true, and R is the correct explanation of A

b) Both A and R are true, but R is not the correct explanation of A

c) A is true, but R is false

d) A is false, but R is true

3. Find the LCM and HCF of 40, 36 and 126 by prime factorization method.

4. Show that $5 + 2\sqrt{3}$ is irrational.

5. Explain why $7 \times 11 \times 13 + 13$ is a composite number.

6. Find the zeroes of the polynomial $x^2 - 3x - 28$ and verify the relationship between the zeroes and the co-efficients.
7. If α and β are zeroes of the polynomial $x^2 - 6x + a$, then find the value of a if $3\alpha + 2\beta = 20$
8. If $\sqrt{2}$ is a zero of the polynomial $6x^3 + \sqrt{2}x^2 - 10x - 4\sqrt{2}$, then find the other two zeroes.
9. Draw graph of the equations $x - y + 1 = 0$ and $3x + 2y - 12 = 0$. Determine the co-ordinates of the vertices of the triangle formed by these lines and the x-axis and shade the triangular region.

Read the following and answer any four questions from (i) to (v).

A seminar is being conducted by an Educational Organisation, where the participants will be educators of different subjects. The number of participants in Hindi, English and Mathematics are 60, 84 and 108 respectively.



- (i) In each room the same number of participants are to be seated and all of them being in the same subject, hence maximum number of participants that can accommodated in each room are

(a) 14	(b) 12	(c) 16	(d) 18
--------	--------	--------	--------
 - (ii) What is the minimum number of rooms required during the event?

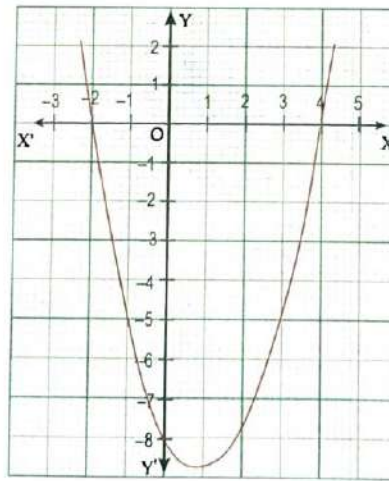
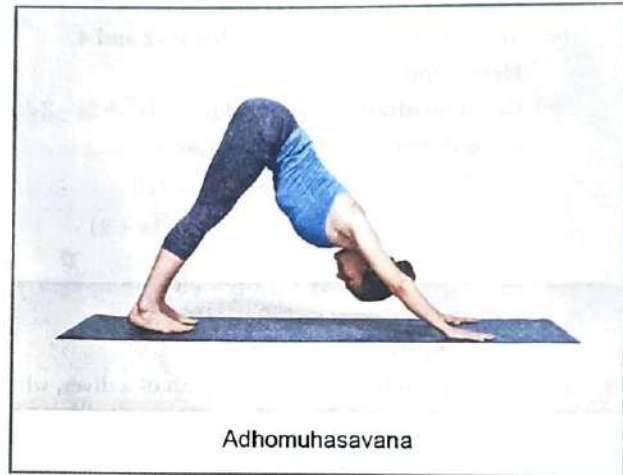
(a) 11	(b) 31	(c) 41	(d) 21
--------	--------	--------	--------
 - (iii) The LCM of 60, 84 and 108 is

(a) 3780	(b) 3680	(c) 4780	(d) 4680
----------	----------	----------	----------
 - (iv) The product of HCF and LCM of 60,84 and 108 is

(a) 55360	(b) 35360	(c) 45500	(d) 45360
-----------	-----------	-----------	-----------
 - (v) 108 can be expressed as a product of its primes as

(a) $2^3 \times 3^2$	(b) $2^3 \times 3^3$	(c) $2^2 \times 3^2$	(d) $2^2 \times 3^3$
----------------------	----------------------	----------------------	----------------------
- 10.
11. Read the following and answer below given four questions: -

An *asana* is a body posture, originally and still a general term for a sitting meditation pose, and later extended in hatha yoga and modern yoga as exercise, to any type of pose or position, adding reclining, standing, inverted, twisting, and balancing poses. In the figure, one can observe that poses can be related to representation of quadratic polynomial.



- (i) The shapes of the poses shown are
 (a) Spiral (b) Ellipse (c) Linear (d) Parabola
- (ii) The graph of parabola opens downward, if
 (a) $a \geq 0$ (b) $a = 0$ (c) $a < 0$ (d) $a > 0$
- (iii) In the graph, how many zeroes are there for the polynomial?
 (a) 0 (b) 1 (c) 2 (d) 3
- (iv) The two zeroes in the above shown graph are
 (a) 2, 4 (b) -2, 4 (c) -8, 4 (d) 2, -8

12. Perform an activity to verify the condition for the consistency/inconsistency for a pair of linear equation in two variables by graphical method.

AI/IT

A. ANSWER THE FOLLOWING:

- What is the disadvantage of Verbal Communication?
- In _____ style of Communication spoken words or speech play the role of conveying the message.
- In _____ style of Communication tone, body language play the role of conveying the message.
- In the process of Communication encoding takes place at whose end?
- Write one factor due to which Communication can be affected.

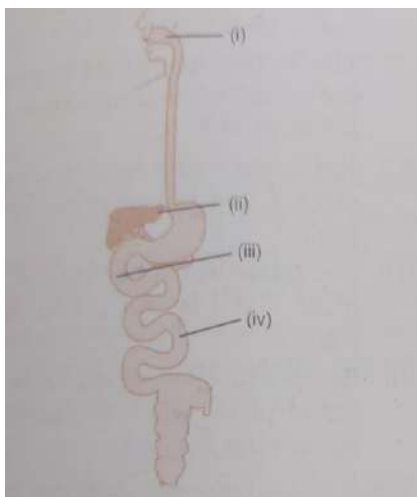
6. The medium through which message is sent is known as?
7. When people of different _____ communicate then the chance of wrong interpretation are higher.
8. _____ is known as sharing of Information.
9. What is the purpose of Feedback?
10. How do you receive Information on Phone?

B. ANSWER THE FOLLOWING:

1. What is the importance of Feedback in Communication?
2. What is Communication?
3. What are the characteristics of effective Feedback ?
4. What is Channel?
5. Who is a Sender?

BIOLOGY

1. Observe the diagram of Human Digestive System & match the labelling referred in column 1 & correlate with the function in column 2



Column 1

Column 2

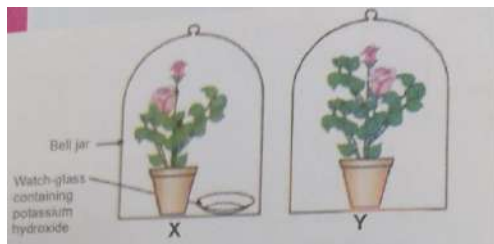
- | | |
|-------|---|
| (i) | (a) The length of this depends on food the organism eats. |
| (ii) | (b) Initial phase of starch digestion |
| (iii) | (c) Increases the efficiency of lipase enzyme action |
| (iv) | (d) This is the site of the complete digestion of carbohydrates, proteins & fats. |

Choose the correct option :

- (A) (i) – (a) ; (ii) – (b) ; (iii) – (c) ; (iv) – (d)
- (B) (i) – (b) ; (ii) – (c) ; (iii) – (d) ; (iv) – (a)
- (C) (i) – (b) ; (ii)- (d) ; (iii) – (c) ; (iv) – (a)
- (D) (i) – (d) ; (ii) – (a) ; (iii) – (b) ; (iv) – (c)

2. Give reason : Bile does not contain any enzyme, yet it is important for digestion of food.
3. Design an activity to show that Chlorophyll is essential for photosynthesis.
4. Case Based Question :

The figure shown below represents an activity to prove the requirements for photosynthesis. During this activity, two healthy potted plants were kept in the dark for 72 hours. After 72 hours, KOH is kept in a watch glass in setup X & not in setup Y. Both these setups are air tight & have been kept in light for 6 hours. Then, Iodine test is performed with one leaf from each of the two plants X & Y.



- (i) This experimental setup is used to prove essentially of which of the following requirements of photosynthesis ?
(A) Chlorophyll (B) Oxygen (C) Carbon dioxide (D) Sunlight
 - (ii) The function of KOH is to absorb
(A) Oxygen (B) Carbon dioxide (C) Moisture (D) Sunlight
 - (iii) Which of the following statements shows the correct result of Iodine test performed on the leaf from plants X & Y respectively.
(A) Blue black colour would be obtained on the leaf of plant X & no change in the colour on leaf of plant Y.
(B) Blue black colour would be obtained on the leaf of plant Y & no change in colour on leaf of plant X.
(C) Red colour would be obtained on the leaf of plant X & brown colour on the leaf of plant Y.
(D) Red colour would be obtained on the leaf of plant Y & brown colour on the leaf of plant X.
5. Prepare a model of Human Digestive System using bio degradable materials available at home as waste material (Model on Best Out Of Waste).

PHYSICS

Conceptual Questions:

Reflection and mirrors

1. Why does a polished surface reflect light more effectively than a rough surface? Explain the difference in the nature of reflection in both cases.
2. You see your image in a plane mirror. What are the key characteristics of this image (size, nature, orientation, distance)? How does the image change if you move closer to or farther away from the mirror?
3. Imagine you are standing in front of a plane mirror. If you lift your right hand, your image appears to lift its left hand. Why does this lateral inversion occur? Is the image really inverted?

4. Differentiate between a real image and a virtual image. Can a plane mirror form a real image? Under what circumstances can concave and convex mirrors form real and virtual images

5. You have a concave mirror and you want to determine its focal length roughly. Describe a simple method you could use.

Mirror Formula and Magnification:

1. What is the sign convention used for object distance (u), image distance (v), and focal length (f) in the mirror formula? Why is it important to follow a consistent sign convention when solving numerical problems?

2. Can the magnification produced by a concave mirror have a value less than 1, equal to 1, and greater than 1? For each case, describe the position and nature of the image.

3. You are given the focal length of a concave mirror. How would the image distance change as you move an object from infinity towards the pole of the mirror? How would the magnification change in this process?

4. Explain why the focal length of a plane mirror can be considered to be infinity. How does this relate to the mirror formula?

Application based Questions:

1. Write any two applications of

a. Concave mirror

b. Convex mirror

c. plane mirror

Also draw the ray diagram for each case.

Analysis and Evaluation Questions:

1. Analyse the importance of mirror (spherical as well as plane) in our day to day life with the help of examples.

2. Solve all the numerical problems using the mirror formula and magnification. Remember the mirror formula is:

$\frac{1}{f} = \frac{1}{v} + \frac{1}{u}$ and the magnification (m) is given by:

$$m = -\frac{v}{u} = \frac{h_i}{h_o}$$

where:

* f is the focal length of the mirror

* v is the image distance

* u is the object distance (always taken as negative for real objects)

* h' is the height of the image

* h is the height of the object

Here are 5 numerical problems for you to solve:

Problem 1:

A candle of height 3 cm is placed at a distance of 10 cm from a concave mirror of focal length 20 cm. Find the position, nature, and height of the image formed. Also, calculate the magnification.

Problem 2:

An object is placed at a distance of 15 cm from a convex mirror of focal length 10 cm. Find the position and magnification of the image. What is the nature of the image?

Problem 3:

A real image, $\frac{1}{4}$ the size of the object, is formed by a concave mirror at a distance of 30 cm from the mirror. Find the focal length of the mirror.

Problem 4:

An object of height 5 cm is placed at a certain distance from a convex mirror. The image formed is virtual, upright, and has a height of 2 cm. If the focal length of the mirror is 10 cm, find the object distance.

Problem 5:

A dentist uses a concave mirror with a focal length of 2.5 cm to view a tooth. If the tooth is placed 1.5 cm from the mirror, find the magnification of the image. What is the nature of the image?

Activity based:-

1. prepare a model of ray diagram for all the cases of spherical mirrors (concave and convex)

using

a. cardboard

b. chart paper of suitable colour (yellow)

c. thread

d. board pins.

CHEMISTRY

1. Which of the following is not a physical change?

(a) Boiling of water to give water vapours

(b) Melting of ice to give water

(c) Dissolution of salt in water

(d) Combustion of Liquefied Petroleum Gas (LPG)

2

The following reaction is an example of a
 $4\text{NH}_3(\text{g}) + 5\text{O}_2(\text{g}) \rightarrow 4\text{NO}(\text{g}) + 6\text{H}_2\text{O}(\text{g})$

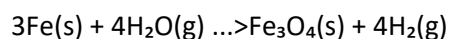
- (i) Displacement reaction
- (ii) combustion reaction
- (iii) redox reaction
- (iv) neutralisation reaction

- (a) (i) and (iv)
- (b) (ii) and (iii)

© (1) and (ii)

- (c) (iii) and (iv)

3. Which of the following statements about the given reaction are correct?



- (i) Iron metal is getting oxidised
- (ii) Water is getting reduced
- (iii) Water is acting as reducing agent
- (iv) Water is acting as oxidising agent

- (a) (i), (ii) and (iii)
- (b) (iii) and (iv)

© (i), (ii) and (iv)

- (c) (ii) and (iv).

4. Which of the following are exothermic processes?

- (i) Reaction of water with quick lime
- (ii) Dilution of an acid
- (iii) Evaporation of water
- (iv) Sublimation of camphor (crystals)

- (a) (i) and (ii)
- (b) (ii) and (iii)

© (1) and (iv)

- (d) (iii) and (iv)

3. The questions given below consist of Assertion a and Reason are use the following key to select the correct answer.

- (a) If both assertion and reason are correct and reason is correct explanation for assertion
- (b) If both assertion and reasons are correct but reason is not correct explanation for a assertion

(c) If an assertion is correct but reason is incorrect

(c) Assertion is incorrect but reason is correct

1. Assertion : In chemical reaction the total mass of the product remains as the total mass of the reactants

Reason: A chemical reaction involves simply exchange of partners and no new species are formed

2. Assertion: Copper can displace silver from Aqueous silver nitrate solution

Reason: Silver is placed above the copper in the reactivity series.

3. Assertion: a piece of sodium metal catches fire when thrown in water

Reason: sodium is a very reactive metal.

4. Assertion: Chemical combination always takes place between two elements

Reason: a single substance is formed in a combination reaction

5. Assertion: quick lime reacts with water to form slaked lime

Reason: it is a slow chemical reaction

6. A silvery white metal X is in the form of ribbons. Upon ignition, it burns with a dazzling white flame to form white powder Y. When water is added to the Powder Y, it partially dissolves to form a substance Z which is used as an antacid.

(a) What is metal X

(b) Name the white powder Z

(c) What is the substance Z

(d) Write the chemical reactions that are taking place.

7. Write the balanced chemical equation for the following reactions

(a) Sodium carbonate on reaction with hydrochloric acid in equal molar concentrations gives sodium chloride and sodium hydrogen carbonate

(b) Sodium hydrogen carbonate on reaction with hydrochloric acid gives sodium chloride, water and liberates carbon dioxide

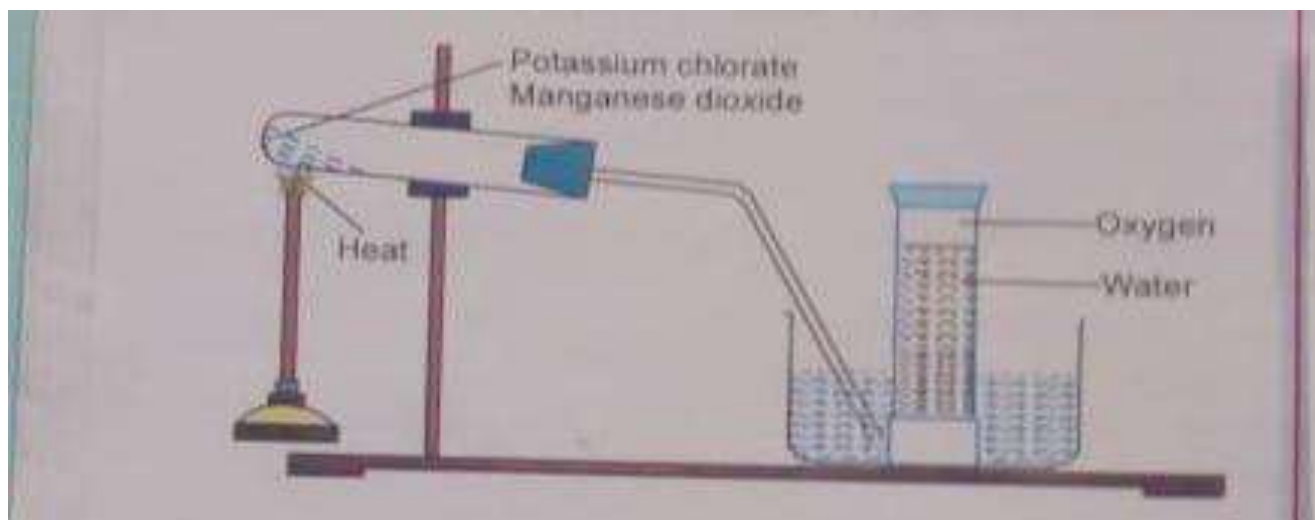
(c) Copper sulphate on treatment with potassium iodide precipitates cuprous iodide (Cu_2I_2), liberates iodine gas and also forms potassium sulphate

3. Read the following and answer the related questions

All chemical changes are accompanied by chemical reactions. In these, reacting species (atoms/molecules) react under certain specified conditions to form products. The chemical reactions are expressed in the form of chemical equations in terms of symbols and formulae of the substance involved. These reactions involve simply the exchange of partners to form products. This can happen in a number of ways leading to different types of reactions such as combination, decomposition, displacement, redox etc

1.1. Oxygen gas is prepared in the laboratory by heating a mixture of KClO_3 and MnO_2 in the ratio of 4:1 by mass. The mixture must be first heated gently so that the reactants may mix and then strongly. Oxygen gas evolved as a result of the reaction is collected





over water

Which of the following statement) is/are) correct about the reaction

- (a) It is a decomposition reaction and is endothermic in nature
- (b) It is a combination reaction
- (c) It is a decomposition reaction and is accompanied by release of heat
- (d) It is photochemical decomposition reaction and is exothermic in nature

1.2 Potassium chlorate is

- a) an oxidizing agents
- (b) used in explosives
- (c) used in safety matches
- (d) All options are correct.

1.3 In the reaction listed in 1.1, manganese dioxide

- (a) Takes part in the reaction
- (b) Help in forming more oxygen
- (c) Acts as a catalyst

1.4. Which one of the following processes involve chemical reaction?

- (a) Storing of oxygen gas under pressure in a gas cylinder
- (b) Liquefaction of air
- (c) Keeping petrol in a china dish in the open
- (d) Heating copper wire in the presence of air at high temperature.

SOCIAL SCIENCE

Instructions: Attempt all sections neatly in your homework notebook . Support answers with illustrations, diagrams or pictures wherever possible.

Section A:

- 1. Identify the type of resources from the following examples and justify your answer:**
 - a) Solar energy
 - b) Coal
 - c) Forests
 - d) Human beings
- 2. Suggest 3 practical ways in which you, as a student, can help in conserving resources at home or school.**
- 3. Write a short paragraph explaining how sustainable development is the key to future survival.**

Section B:

- 1. “Conservation of resources is not a choice but a necessity.”**
 - Justify this statement by connecting it to values like responsibility, intergenerational justice, and sustainability.
 - Suggest two values that you learn from traditional practices of resource conservation in India (e.g., Chipko Movement, rainwater harvesting).

Section C:

Source:

"India has immense diversity in the availability of resources. Some regions are rich in certain types of resources but deficient in others. For example, states like Jharkhand, Chhattisgarh and Madhya Pradesh are rich in minerals and coal deposits. Arunachal Pradesh has abundance of water resources but lacks infrastructure. This calls for balanced resource planning at the national, state, and local levels."

Questions:

- 1. What is meant by resource planning?**
- 2. Why is resource planning essential in a country like India?**
- 3. Mention two consequences of the unequal distribution of resources.**

Section D: Map Skills

- 1. On a political map of India, mark and label the following:**
 - a) Major soil types: Alluvial, Black, Red, Laterite, Arid, and Mountain soil.
 - b) Major resource-rich states: Jharkhand, Chhattisgarh, Rajasthan, Odisha.
 - c) Identify and shade areas where land degradation is visible (e.g., Rajasthan, Gujarat, Madhya Pradesh, Maharashtra).
- (Paste map in notebook or attach as a project sheet)**

Section E:

- 1. Why is black soil considered ideal for cotton cultivation? Give 2 reasons.**
- 2. Why is there a need for sustainable development in India despite its rich natural resource base?**
- 3. Why is conservation of resources essential? Give 3 logical reasons in your own words.**

Extension Task

Create a digital or handmade collage/poster showing "Smart Resource Use for a Sustainable Future." Use newspapers, drawings, and labels.

Project Work:

" Make a project on any one of the following topics. (To be done in Project File)

- 1. Consumer Awareness**
- 2. Sustainable Development**
- 3. Social Issues**

Follow CBSE guidelines strictly.

Use A-4 size file paper (one side ruled)

Use blue or black ink to write your project.

Design the cover page in such a way that it reflects your topic.

Write Topic of the project, Name, Class and Sec, Roll no. on the cover page in bold letters.

Use bottom space for your Name, Class and sec, Roll no.

However, the project work should not be of less than 15 pages (including the cover page)

Topics Included:

Designing the cover page

Writing acknowledgement

Making Index page

Introduction Page

Contents

Conclusion

Bibliography

History & Civics

Do the homework in your holiday homework notebook

MCQs

1. Which of the following statements is true about nation states?

- A. Citizens share a common sense of shared identity or history.**
- B. Nation state is a state ruled by one ruler.**
- C. Commonness is forged through linguistic factor only.**
- D. Nation states are directly ruled by people and based on heterogenization of society.**

2. Industrialisation began in which one of the following European countries in the second- half of the eighteenth century?

- A. Germany B. France C. Italy D. England**

3. What type of conservative regimes were set up in 1815 in Europe?

- A. Autocratic B. Democratic C. Aristocratic D. Dictatorial**

4. Which one of the following group of countries collectively defeated Napoleon in 1815?

- A. Britain, Russia, Prussia, Austria**
- B. Britain, Russia, Prussia , Australia**
- C. Britain, Russia, Netherlands, Germany**
- D. Britain, Luxembourg, Germany, Italy**

5. Fill in the blank by choosing the right answer from the options given below:

Country/Region	Language Spoken
Bohemia	German
Galicia	-----

- A. Magyar B. French C. Polish D. Russian**

6. The liberal nationalism stands for:

- A. freedom for the individual and equality before law.**
- B. preservation of autocracy and clerical privileges.**
- C. freedom for only male members of society and equality before law.**
- D. freedom only for senior citizens.**

7. Identify the correct option describing the type of power sharing.

- (i) Distribution of power among different organs of the government.**
- (ii) Different organs of the government exercise different powers.**
- (iii) It specifies the concept of checks and balances.**

- A. Power sharing between social groups**
- B. Vertical power sharing**
- C. Horizontal power sharing**
- D. Power sharing between political parties and pressure groups**

8 .Who elects the community government in Belgium?

- A. People belonging to only one language community**
- B. By the Belgian leaders C. Citizens of the whole country.**
- D. Belgian Community Leader**

Short answer type Questions

9. Why did Frederic Sorrieu present utopian vision in his prints in 1848?

10. What role did Zollverein play in the economic integration of German states?

11. Identify the Personality: i) He was an Austrian Chancellor.

ii) He hosted the Congress of Vienna

12. Why is Power Sharing necessary?

13. What is Napoleonic Code What did conservatives believe?

14. What does 'Nation-state' mean?

15. What was the strong demand of the emerging middle classes in Europe during nineteenth century?

16. Mention the measures adopted by the Belgian Government to resolve the conflict between the Dutch and the French.

17. A Civil War in Sri Lanka resulted in the death of thousands of Sinhalese and Sri Lankan Tamils. Highlight the conditions which led to this war.

18 .Directions- In the questions given below, there are two statements marked as Assertion (A) and Reason (R). Read the statements and choose the correct option:

- A. Both A and R are true and R. is the correct explanation of A.*
- B. Both A and R are true and but R is not the correct explanation of A.*
- C. A is correct and R is Incorrect.*
- D. Both A and R are incorrect*

Assertion- Reason

- i) **Assertion:** Power Sharing can help to prevent conflict in society
Reason: Power Sharing ensures rule of minority sections.
- ii) **Assertion:** Sri Lanka adopted 'Tamil' as the official language of the state.
Reason: The government of Sri Lanka adopted a series of majoritarian measures.
- iii) **Assertion:** Conservatives believed that established traditional institutions of state and society should be preserved.
Reason: Zollverein was formed to preserve conservatism.
- iv) **Assertion:** Belgian leaders recognize the existence of regional differences.
Reason: The minority French-speaking community was relatively prosperous and powerful.
- v) **Assertion:** An Act was passed in 1956 to recognize Sinhalese as an official language.
Reason: The new constitution stipulated that the state would protect and promote Hinduism

Long answer Type Questions

19. "Napoleon's administrative measures had revolutionized the whole administration".
Comment.

20. "The French Revolution left an indelible mark on the world history." Evaluate this statement.

21. Discuss the main provisions of the Civil Code of 1804.

22. What were the main features of the European Aristocracy?

23. What was the main aim of the Vienna Congress of 1815? Discuss its main features?

24 Image Based Questions

➤ What can we understand about the democracy from the picture given below?

- a) We supported to follow law
- b) There is no room for discussion as everything is pre-decided
- c) There is dictatorship in the democratic form of government
- d) The leaders are ignorant about the powers they possess.



The Club of Thinkers, anonymous caricature dating to c. 1820. 'The most important question of today's meeting: How long will thinking be allowed to us?' 'Silence is the first commandment of this learned society.'

25.

➤ Which of the following best signifies this image?

- a) War at Zweibrucken, German
- b) People celebrating Christmas
- c) Planting of tree of Liberty
- d) None of the above



Economics - Chapter 1: Development

Instructions: Dear Students, utilize this break to delve deeper into the concept of development. Approach each section thoughtfully and present your work neatly.

A. Competency Based Questions (Focus: Application and Analysis)

These questions require you to apply your understanding of development in different scenarios and analyze the given information.

1. Imagine two neighboring villages. Village A has a higher per capita income but lacks proper sanitation facilities, leading to frequent health issues. Village B has a lower per capita income but boasts excellent healthcare and sanitation. Which village do you think is more developed and why? Justify your answer by considering factors beyond just income.
2. The Human Development Index (HDI) considers health, education, and income. Can you think of two other important aspects that could be included in a more comprehensive measure of development? Explain why you think these aspects are crucial.
3. "Sustainable development is essential for the well-being of future generations." Analyze this statement in the context of resource use and environmental conservation. Provide two concrete examples of how unsustainable practices can hinder future development.

B. Source/Case Based Questions (Focus: Interpretation and Critical Thinking)

Case Study: The Contrasting Development Paths of Kerala and Punjab

Kerala, despite having a lower per capita income than Punjab, has significantly higher literacy rates and better healthcare indicators. Punjab, on the other hand, has a high per capita income largely due to its agricultural prosperity but lags behind in certain social development aspects.

* Based on the case study, what can you infer about the relationship between per capita income and human development?

A. Identify two factors that might have contributed to Kerala's higher literacy and healthcare indicators despite a lower per capita income.

B. Can Punjab achieve a more balanced development? Suggest two measures that the state government could take to improve its social development indicators.

C. Conceptual Questions (Focus: Understanding and Explanation)

1. Define the term "development" in your own words. Why is it considered a multifaceted concept?
2. Differentiate between economic growth and economic development. Give a suitable example to illustrate your point.
3. Explain the significance of considering "average income" as an indicator of development. What are its limitations?