

WORKSHEET

Class: 9th

Topic: FUNDAMENTAL UNIT OF LIFE

Subject: BIOLOGY

(BASED ON CONTENT UPLOADED)

1. Chromosomes are formed of? (1)

- a) DNA only
- b) Protein only
- c) DNA and protein
- d) RNA only

ANSWER -

2. Stored form of carbohydrates in plant generally is : (1)

- a) Vitamins
- b) Glycogens
- c) Amino acids
- d) Starch

ANSWER -

3. Within the cell the site of respiration is : (1)

- a) Ribosomes
- b) Golgi apparatus
- c) Mitochondria
- d) Endoplasmic reticulum

ANSWER -

4. Organisms lacking nucleus and membrane bound organelles are : (1)

- a) Diploids
- b) Prokaryotes
- c) Haploids
- d) Eukaryotes

ANSWER -

5. Which of the following organelles does not have membrane ? (1)

- a) Ribosome
- b) Nucleus
- c) Chloroplast
- d) Mitochondria

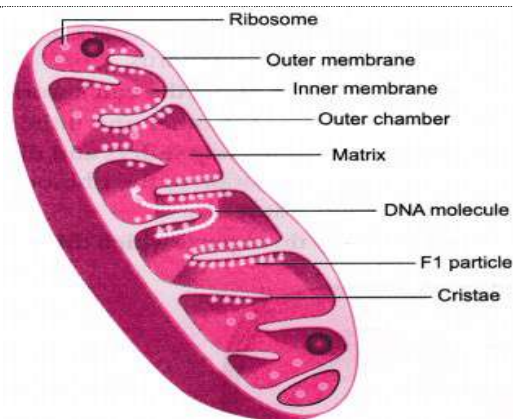
ANSWER -

6. Network of endoplasmic reticulum is found in : (1)

- a) Nucleus
- b) Cytoplasm
- c) Chromosomes
- d) Nucleolus

ANSWER -

7. Based on following diagram and your knowledge, answer the following questions -



I. Name the cell organelles shown in the figure? (1)

ANSWER -

II. The given cell organelle is also known as the “ Power house of the cell”. Why ? (2)

ANSWER -

8. In brief state what happens when (1x3)

I. The plasma membrane of a cell breaks down ?

ANSWER -

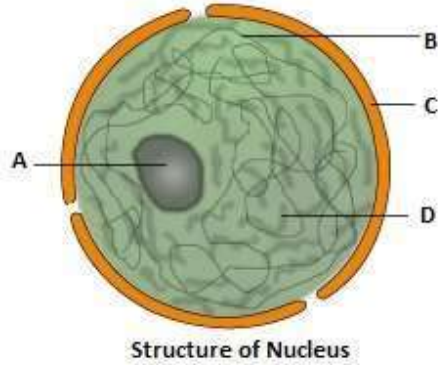
II. A Red Blood Cell is kept in concentrated saline solution ?

ANSWER -

III. Golgi apparatus is removed from the cell ?

ANSWER -

9. Based on diagram and your knowledge, answer the following questions -



I. Label the parts A, B, C and D.

(2)

ANSWER-

II. Mention one function of A ?

(1)

ANSWER -

9. Answer the following questions -

I. Define the following terms -

(3)

a) Plasmolysis

ANSWER -

b) Endocytosis

ANSWER -

c) Membrane biogenesis

ANSWER -

II. State one feature that is similar and one feature that is dissimilar with respect to mitochondria and plastids.

(2)

ANSWER -